

GIRLS' SWEET 16 CHAMPIONSHIP

First Round

RUSSELL COUNTY

VS.

APOLLO

March 25, 1993

Official Boxscore *** FINAL ***

Date: 03-25-93 Site:GIRLS STATE TOURNEY GM 7

VISITORS (Last Name, First)

NO.	APOLLO	Tot FG		3-POINT		FT	FTA	Rebounds			PF	TP	A	TO	BLK	S	TIME
		FG	FGA	FG	FGA			OFF	DEF	TOT							
20	TRUITT, CARRIE	4	13	0	2	0	0	0	2	2	0	3	1	1	0	0	23:41
22	MORRISON, ABBY	2	7	0	0	1	2	6	2	8	2	5	1	0	0	0	30:18
23	ALLISON, SARAH	5	11	0	0	0	0	6	4	10	4	10	1	1	0	1	28:30
14	TOWNSEND, LAURIE	8	18	3	8	2	2	0	1	1	3	21	3	4	0	4	32:00
25	POWERS, AMY	1	10	0	1	0	0	1	0	1	1	2	3	2	0	2	25:15
15	WHITMER, CARRIE	0	2	0	0	0	0	1	1	2	3	0	2	0	0	0	16:46
44	JOINES, SHIRLENE	1	1	0	0	0	0	1	0	1	1	2	0	0	0	0	3:30
TEAM REBOUNDS (INCLUDED IN TOTALS)																	
TOTALS		21	62	3	11	3	4	15	11	26	14	48	11	8	0	7	160
TOTAL FG 1st HALF		4/11	36.4%	2nd HALF		17/51	33.3%	GAME		21/62	33.9%	DEADBALL					
3-POINT FG 1st HALF		0/1	0.0%	2nd HALF		3/10	30.0%	GAME		3/11	27.3%	REBOUNDS		2			
FREE THROWS 1st HALF		1/2	50.0%	2nd HALF		2/2	100.0%	GAME		3/4	75.0%						

HOME (Last Name, First)

NO.	RUSSELL COUNTY	Tot FG		3-POINT		FT	FTA	Rebounds			PF	TP	A	TO	BLK	S	TIME
		FG	FGA	FG	FGA			OFF	DEF	TOT							
20	LOY, DEBBIE	10	14	0	0	2	3	0	8	8	1	22	0	3	1	0	32:00
50	HIGGINBOTHAM, S.	6	13	3	7	1	2	2	9	11	3	16	8	7	1	2	32:00
33	REXROAT, KELLY	1	3	0	0	2	2	3	2	5	1	4	0	0	0	0	22:17
22	BECK, DUCHIE	0	4	0	0	2	3	1	3	4	2	2	1	3	0	0	24:41
34	McFARLAND, K.	2	2	0	0	0	0	2	3	5	2	4	4	5	0	0	29:44
44	MORRIS, COURTNEY	1	1	0	0	0	0	0	0	0	0	2	0	0	0	2	9:43
32	MILLER, ANGIE	0	0	0	0	0	0	0	0	0	0	0	1	1	0	0	2:58
42	POPPELWELL, JILL	0	1	0	0	0	0	0	0	0	0	0	1	0	0	0	3:30
03	NEWBY, CHERYL	0	0	0	0	0	0	0	0	0	0	0	1	1	0	0	3:07
TEAM REBOUNDS (INCLUDED IN TOTALS)																	
TOTALS		20	38	3	7	7	10	8	26	34	9	50	16	21	2	4	160
TOTAL FG 1st HALF		5/11	45.5%	2nd HALF		15/27	55.6%	GAME		20/38	52.6%	DEADBALL					
3-POINT FG 1st HALF		2/3	66.7%	2nd HALF		1/4	25.0%	GAME		3/7	42.9%	Rebounds		1			
FREE THROWS 1st HALF		0/0	0.0%	2nd HALF		7/10	70.0%	GAME		7/10	70.0%						

OFFICIALS: DENNIS JACKSON, TOMMY HALL, ALT.-L. COOK
 Technicals: None

		SCORE BY PERIODS			
APOLLO		9	15	12	12 = 48
RUSSELL COUNTY		12	11	19	8 = 50

Attendance: 3,560

COMMENTS: POINTS OFF TURNOVERS
 APOLLO 22 RUSSELL COUNTY 4 APOLLO 14 RUSSELL COUNTY 12

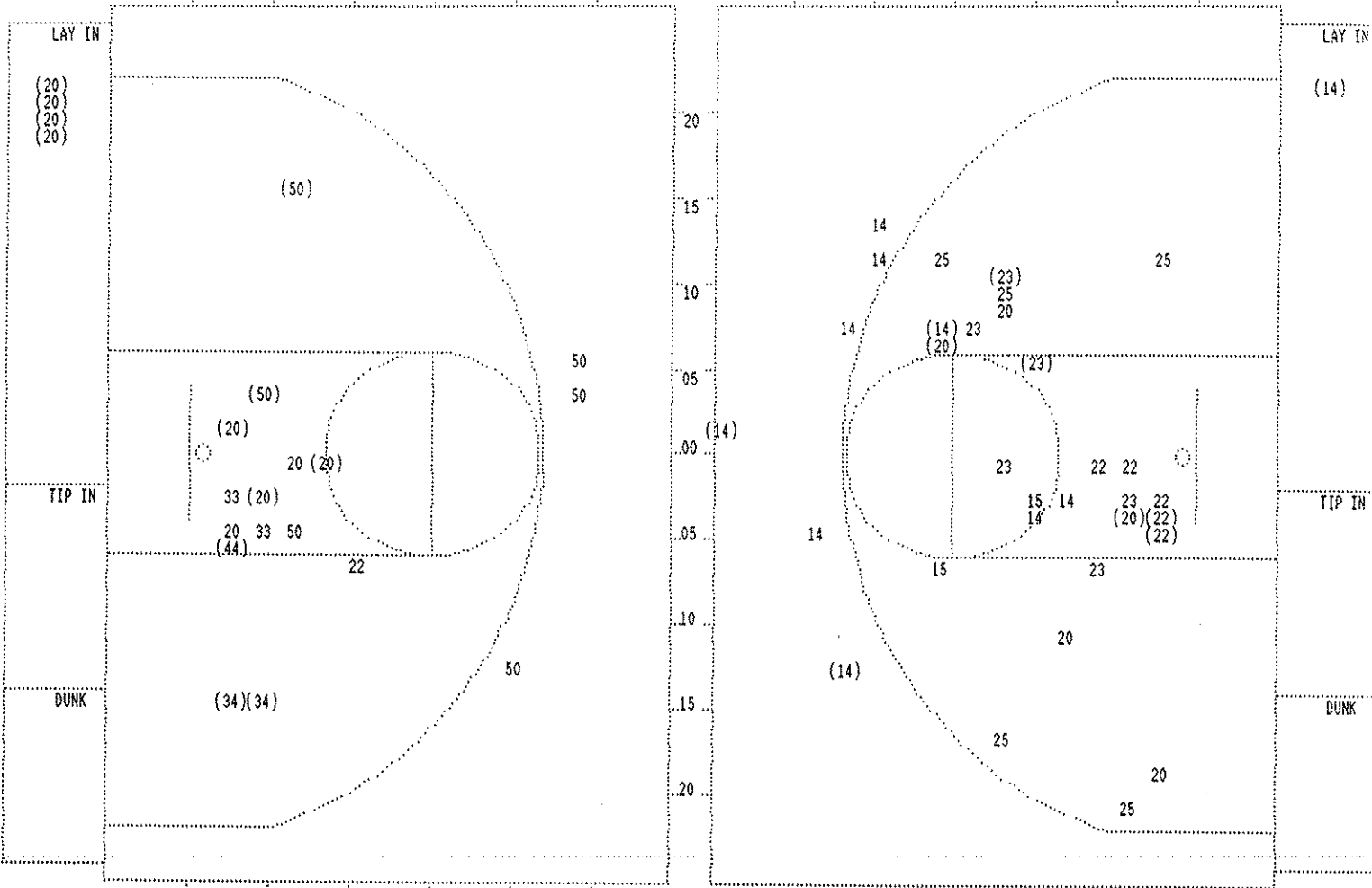
Produced by the KHSAA Sweet Sixteen Stat Crew with FINAL III - a Product of LEXICON SPORTS™

Player	Team	RUSSELL COUNTY
LOY, DEBBIE, HIGGINBOTHAM, S., REXROAT, KELLY, BECK, DUCHIE, MCFARLAND, K.		
9-12	75.0%	18-30 60.0%
4	15	3 ft Lane Turnaround by LOY, DEBBIE
1	1	Assist by MCFARLAND, K.
		Foul on BECK, DUCHIE
1	2	Foul on REXROAT, KELLY
6-11	54.5%	19-34 55.8%
2	3	16 ft Right Side Jump shot by HIGGINBOTHAM, S.
		Foul on BECK, DUCHIE
10-14	71.4%	20-35 57.1%
8	16	Turnaround Layup by LOY, DEBBIE
2	4	Assist by HIGGINBOTHAM, S.
		Foul on MCFARLAND, K.
REB: 30 A: 16 BLK: 2 TO: 18 PF: 4 S: 4 FT: 5-6 83.3% FG: 20-35 57.1%		
3	5	Foul on HIGGINBOTHAM, S.
2-2	100%	7-8 87.5%
		BECK, DUCHIE, 2 Free Throws made both
REB: 32 A: 16 BLK: 2 TO: 21 PF: 5 S: 4 FT: 7-8 87.5% FG: 20-37 54.0%		
2-3	66.6%	7-9 77.7%
1	6	BECK, DUCHIE, 1 & Bonus missed 1st
		Foul on LOY, DEBBIE
1-2	50.0%	7-10 70.0%
		HIGGINBOTHAM, S., 1 & Bonus missed 1st

Time	Score	APOLLO	Player	Team
TOWNSEND, LAURIE, ALLISON, SARAH, WHITMER, CARRIE, POWERS, AMY, MORRISON, ABBY				
Ball to LADY EAGLES				
4	7:17	*44-36		
4	6:58			
4	6:58	Sub In: TRUITT, CARRIE Out: WHITMER, CARRIE		
4	5:50	Foul on ALLISON, SARAH	4	5
4	5:02			
4	5:02	Sub In: WHITMER, CARRIE Out: MORRISON, ABBY		
4	5:02	16 ft Left Angle Jump shot by TOWNSEND, LAURIE	7-16	43.7% 17-54 31.4%
4	4:25	*46-38		
4	4:12			
4	3:57	46-40* 16 ft Left Angle Jump shot by TRUITT, CARRIE	3-11	27.2% 18-55 32.7%
		Assist by WHITMER, CARRIE	1	9
4	3:38	*48-40		
4	3:20			
4	3:20	Sub In: MORRISON, ABBY Out: POWERS, AMY		
4	3:20	48-42* 14 ft Left Angle Jump shot by ALLISON, SARAH	5-11	45.4% 19-57 33.3%
		Assist by WHITMER, CARRIE	2	10
4	2:50			
REB: 22 A: 10 BLK: 0 TO: 7 PF: 5 S: 6 FT: 1-2 50.0% FG: 19-57 33.3%				
No. 1 RUSSELL COUNTY TIME - O U T				
4	2:43	48-44* Layup Off Fast Break by TOWNSEND, LAURIE	8-17	47.0% 20-58 34.4%
4	2:29			
4	2:29	48-46* TOWNSEND, LAURIE, 2 Free Throws made both	2-2	100% 3-4 75.0%
4	2:09	Foul on MORRISON, ABBY	2	6
4	2:09	*50-46		
4	0:53	50-48* 3 ft Lane Follow by TRUITT, CARRIE	4-13	30.7% 21-61 34.4%
		Assist by ALLISON, SARAH	1	11
4	0:40			
REB: 24 A: 11 BLK: 0 TO: 8 PF: 6 S: 7 FT: 3-4 75.0% FG: 21-61 34.4%				
No. 2 RUSSELL COUNTY TIME - O U T				
4	0:40	Sub In: POWERS, AMY Out: TRUITT, CARRIE		
4	0:13	Foul on TOWNSEND, LAURIE	2	7
4	0:13	Sub In: TRUITT, CARRIE Out: POWERS, AMY		
4	0:13			
4	0:12			
4	0:02	Foul on TOWNSEND, LAURIE	3	8
4	0:02			
4	0:00	Rebound by TOWNSEND, LAURIE	D-1 Tot-1	D-1 Tot-26

Player	Team	RUSSELL COUNTY	Time	Score	APOLLO	Player	Team	
LOY, DEBBIE	HIGGINBOTHAM, S.	REXROAT, KELLY, BECK, DUCHIE, McFARLAND, K.			TRUITT, CARRIE, MORRISON, ABBY, ALLISON, SARAH, TOWNSEND, LAURIE, POWERS, AMY			
1-1	100%	9-19 47.3%	14 ft Left Side Jump shot by McFARLAND, K.	3 7:35	*25-24			
2		7	Assist by HIGGINBOTHAM, S.					
2-2	100%	10-21 47.6%	14 ft Left Base Line Jump shot by McFARLAND, K.	3 6:12	*27-24			
3		8	Assist by HIGGINBOTHAM, S.					
4-7	57.1%	11-22 50.0%	2 ft Lane Bank by LOY, DEBBIE	3 5:46	*29-24			
3		9	Assist by McFARLAND, K.					
		REB: 19 A: 9 BLK: 2 TO: 11 PF: 0		3 5:42				
		S: 1 FT: 4-5 80.0% FG: 11-22 50.0%	T I M E - O U T	APOLLO No. 1	REB: 14 A: 6 BLK: 0 TO: 4 PF: 0			
		Sub In: MORRIS, COURTNEY Out: REXROAT, KELLY	3 5:42		S: 5 FT: 1-2 50.0% FG: 11-33 33.3%			
			3 5:42	29-26*	10 ft Left Angle Jump shot by ALLISON, SARAH	4-8	50.0% 12-34 35.2%	
					Assist by TRUITT, CARRIE	1	7	
			3 5:13		Foul on ALLISON, SARAH	3	1	
5-8	62.5%	12-23 52.1%	Layup Off Fast Break by LOY, DEBBIE	3 5:10	*31-26			
4		10	Assist by HIGGINBOTHAM, S.					
6-9	66.6%	13-25 52.0%	6 ft Lane Turnaround by LOY, DEBBIE	3 3:18	*33-26			
		REB: 21 A: 10 BLK: 2 TO: 14 PF: 0		3 3:15				
		S: 4 FT: 4-5 80.0% FG: 13-25 52.0%	T I M E - O U T	APOLLO No. 2	REB: 15 A: 7 BLK: 0 TO: 7 PF: 1			
					S: 5 FT: 1-2 50.0% FG: 12-36 33.3%			
		REB: 21 A: 10 BLK: 2 TO: 14 PF: 0		3 3:15				
		S: 4 FT: 4-5 80.0% FG: 13-25 52.0%	T I M E - O U T	APOLLO No. 3	REB: 15 A: 7 BLK: 0 TO: 7 PF: 1			
		Sub In: NEWBY, CHERYL Out: BECK, DUCHIE	3 3:07					
			3 2:58		Sub In: WHITMER, CARRIE Out: TRUITT, CARRIE			
			3 2:40		Foul on WHITMER, CARRIE	3	2	
5-9	55.5%	14-26 53.8%	4 ft Lane Jump shot by HIGGINBOTHAM, S.	3 2:26	*35-26			
1		11	Assist by NEWBY, CHERYL					
				3 2:25				
					Foul on MORRISON, ABBY	1	3	
		REB: 23 A: 11 BLK: 2 TO: 15 PF: 0		3 2:25				
		S: 4 FT: 4-5 80.0% FG: 14-26 53.8%	T I M E - O U T	APOLLO No. 4	REB: 16 A: 7 BLK: 0 TO: 7 PF: 3			
					S: 5 FT: 1-2 50.0% FG: 12-39 30.7%			
1-1	100%	5-6 83.3%	HIGGINBOTHAM, S., 1 Free Throw made	3 2:25	*36-26			
1-1	100%	15-27 55.5%	4 ft Lane Jump shot by MORRIS, COURTNEY	3 1:53	*38-26			
5		12	Assist by HIGGINBOTHAM, S.					
				3 1:17	38-28*	2 ft Lane Bank by MORRISON, ABBY	1-5	20.0% 13-41 31.7%
						Assist by POWERS, AMY	3	8
				3 1:06	38-31*	3 pt 23 ft Right Angle Jump shot by TOWNSEND, LAURIE	5-11	45.4% 14-42 33.3%
7-10	70.0%	16-28 57.1%	Bank Layup by LOY, DEBBIE	3 0:40	*40-31			
6		13	Assist by HIGGINBOTHAM, S.					
				3 0:15	40-33*	4 ft Lane Follow by MORRISON, ABBY	2-6	33.3% 15-44 34.0%
				3 0:11		Foul on TOWNSEND, LAURIE	1	4
8-11	72.7%	17-29 58.6%	Bank Layup by LOY, DEBBIE	3 0:06	*42-33			
7		14	Assist by HIGGINBOTHAM, S.					
				3 0:00	42-36*	3 pt 28 ft Straight Away Jump shot by TOWNSEND, LAURIE	6-13	46.1% 16-45 35.5%

SECOND HALF SHOT CHART Produced by the KHSAA Sweet Sixteen Stat Crew with FINAL III - a Product of LEXICON SPORTS™



RUSSELL COUNTY						
Player			Player			Player
20 - LOY, DEBBI	7 / 9	77.7%	44 - MORRIS, COU	1 / 1	100.0%	
50 - HIGGINBOTH	2 / 6	33.3%				
33 - REXROAT, K	0 / 2	0.0%				
22 - BECK, DUCH	0 / 1	0.0%				
34 - McFARLAND,	2 / 2	100.0%				
Layups	1-9 Ft	10-15 Ft	Over 15 Ft	3 Pointers	Total	
4 / 4	5 / 10	2 / 3	1 / 1	0 / 3	12 / 21	
100.0%	50.0%	66.7%	100.0%	0.0%	57.1%	

APOLLO						
Player			Player			Player
20 - TRUITT, CA	2 / 5	40.0%	15 - WHITHER, C	0 / 2	0.0%	
22 - MORRISON,	2 / 5	40.0%				
23 - ALLISON, S	2 / 6	33.3%				
14 - TOWNSEND, L	4 / 10	40.0%				
25 - POWERS, AM	0 / 5	0.0%				
Layups	1-9 Ft	10-15 Ft	Over 15 Ft	3 Pointers	Total	
1 / 1	3 / 11	2 / 9	2 / 6	2 / 6	10 / 33	
100.0%	27.3%	22.2%	33.3%	33.3%	30.3%	

Official Boxscore * OFFICIAL FIRST HALF * Date: 03-25-93 Site: GIRLS STATE TOURNEY GM 7

VISITORS (Last Name, First)

NO.	APOLLO	Tot FG		3-POINT		FT	FTA	Rebounds			PF	TP	A	TO	BLK	S	TIME	
		FG	FGA	FG	FGA			OFF	DEF	TOT								
20	TRUITT, CARRIE	2	8	0	2	0	0	0	1	1	0	4	0	1	0	0	12:08	
22	MORRISON, ABBY	0	2	0	0	1	2	3	2	5	0	1	1	0	0	0	16:00	
23	ALLISON, SARAH	3	5	0	0	0	0	3	1	4	2	6	0	0	0	1	12:30	
14	TOWNSEND, LAURIE	4	8	1	2	0	0	0	0	0	0	9	3	1	0	2	16:00	
25	POWERS, AMY	1	5	0	1	0	0	1	0	1	1	2	2	2	0	2	12:08	
15	WHITMER, CARRIE	0	0	0	0	0	0	1	0	1	2	0	0	0	0	0	7:44	
44	JOINES, SHIRLENE	1	1	0	0	0	0	1	0	1	0	2	0	0	0	0	3:30	
TEAM REBOUNDS (INCLUDED IN TOTALS)																		
TOTALS		11	29	1	5	1	2	9	5	14	5	24	6	4	0	5	80	

TOTAL FG 1st HALF 4/11 36.4% 2nd HALF 7/18 38.9% GAME 11/29 37.9% DEADBALL
 3-POINT FG 1st HALF 0/1 0.0% 2nd HALF 1/4 25.0% GAME 1/5 20.0% REBOUNDS 1
 FREE THROWS 1st HALF 1/2 50.0% 2nd HALF 0/0 0.0% GAME 1/2 50.0%

HOME (Last Name, First)

NO.	RUSSELL COUNTY	Tot FG		3-POINT		FT	FTA	Rebounds			PF	TP	A	TO	BLK	S	TIME	
		FG	FGA	FG	FGA			OFF	DEF	TOT								
20	LOY, DEBBIE	3	5	0	0	2	3	0	3	3	0	8	0	0	1	0	16:00	
50	HIGGINBOTHAM, S.	4	7	3	4	0	0	1	3	4	2	11	1	5	1	0	16:00	
33	REXROAT, KELLY	1	1	0	0	2	2	2	2	4	0	4	0	0	0	0	11:59	
22	BECK, DUCHIE	0	3	0	0	0	0	0	1	1	0	0	1	2	0	0	11:48	
34	McFARLAND, K.	0	0	0	0	0	0	1	0	1	1	0	2	2	0	0	13:44	
44	MORRIS, COURTNEY	0	0	0	0	0	0	0	0	0	0	0	0	0	0	1	4:01	
32	MILLER, ANGIE	0	0	0	0	0	0	0	0	0	0	0	1	1	0	0	2:58	
42	POPPELWELL, JILL	0	1	0	0	0	0	0	0	0	0	0	1	0	0	0	3:30	
TEAM REBOUNDS (INCLUDED IN TOTALS)																		
TOTALS		8	17	3	4	4	5	4	9	13	3	23	6	10	2	1	80	

TOTAL FG 1st HALF 5/11 45.5% 2nd HALF 3/6 50.0% GAME 8/17 47.1% DEADBALL
 3-POINT FG 1st HALF 2/3 66.7% 2nd HALF 1/1 100.0% GAME 3/4 75.0% REBOUNDS 1
 FREE THROWS 1st HALF 0/0 0.0% 2nd HALF 4/5 80.0% GAME 4/5 80.0%

OFFICIALS: DENNIS JACKSON, TOMMY HALL, ALT.-L. COOK
 Technicals: None

SCORE BY PERIODS
 APOLLO 9 15 = 24
 RUSSELL COUNTY 12 11 = 23

Attendance:

COMMENTS: POINTS OFF TURNOVERS SECOND CHANCE POINTS
 APOLLO 13 RUSSELL COUNTY 2 APOLLO 8 RUSSELL COUNTY 6

Produced by the KHSAA Sweet Sixteen Stat Crew with FINAL III - a Product of LEXICON SPORTS™

APOLLO "LADY EAGLES" vs RUSSELL COUNTY "LAKERS"
1st Half Play by Play

Player	Team	RUSSELL COUNTY		
LOY, DEBBIE, MILLER, ANGIE, REXROAT, KELLY, HIGGINBOTHAM, S., McFARLAND, K. Ball to LAKERS				
4-7	57.1%	6-12	50.0%	3 pt 23 ft Left Side Jump shot by HIGGINBOTHAM, S. Assist by MILLER, ANGIE
1		5		
2-2	100%	2-2	100%	REXROAT, KELLY, 2 Free Throws made both Foul on HIGGINBOTHAM, S.
2		3		
Sub In: BECK, DUCHIE Out: MILLER, ANGIE				
Sub In: POPPLEWELL, JILL Out: McFARLAND, K.				
0-1	00.0%	2-3	66.6%	LOY, DEBBIE, 1 Free Throw missed
1-2	50.0%	3-4	75.0%	LOY, DEBBIE, 1 Free Throw made
3-5	60.0%	7-15	46.6%	2 ft Lane Driving by LOY, DEBBIE Assist by POPPLEWELL, JILL
1		6		
Sub In: McFARLAND, K. Out: BECK, DUCHIE				
2-3	66.6%	4-5	80.0%	LOY, DEBBIE, 1 Free Throw made
1-1	100%	8-17	47.0%	3 ft Lane Follow by REXROAT, KELLY

PAGE : 2

Tip off at 7:30 p.m. on 03/25/93 at GIRLS STATE TOURNEY GM 7
Produced by the KHSAA Sweet Sixteen Stat Crew with FINAL III - a Product of LEXICO

Time	Score	APOLLO	Player	Team
TOWNSEND, LAURIE, TRUITT, CARRIE, MORRISON, ABBY, ALLISON, SARAH, WHITMER, CARRIE				
2	7:50	*15-9		
2	7:22		2	3
2	7:22	Foul on WHITMER, CARRIE		
2	7:22	Sub In: POWERS, AMY Out: TRUITT, CARRIE		
2	7:22	*17-9		
2	6:26			
2	5:46	17-11*	3-4	75.0% 5-16 31.2%
10 ft Lane Jump shot by ALLISON, SARAH Assist by TOWNSEND, LAURIE				
2	5:24	17-13*	1-3	33.3% 6-17 35.2%
Driving Layup by TOWNSEND, LAURIE				
2	5:02			
2	3:30		2	4
2	3:30	Foul on ALLISON, SARAH		
2	3:30	Sub In: TRUITT, CARRIE Out: WHITMER, CARRIE		
2	3:30	Sub In: JOINES, SHIRLENE Out: ALLISON, SARAH		
2	3:30			
2	3:20	*18-13		
2	2:56		1	5
Foul on POWERS, AMY				
2	2:36	18-15*	1-1	100% 7-24 29.1%
2 ft Lane Follow by JOINES, SHIRLENE				
2	1:52	18-17*	2-6	33.3% 8-25 32.0%
16 ft Right Angle Jump shot by TOWNSEND, LAURIE				
2	1:36	18-19*	3-7	42.8% 9-26 34.6%
Layup Off Fast Break by TOWNSEND, LAURIE				
2	1:14	*20-19		
2	1:14			
2	1:14	*21-19		
2	0:43	21-21*	1-5	20.0% 10-27 37.0%
13 ft Lane Jump shot by POWERS, AMY Assist by MORRISON, ABBY				
2	0:24	*23-21	1	5
2	0:07	23-24*	4-8	50.0% 11-29 37.9%
3 pt 22 ft Left Angle Jump shot by TOWNSEND, LAURIE Assist by POWERS, AMY				
			2	6

APOLLO "LADY EAGLES" vs RUSSELL COUNTY "LAKERS"
1st Half Play by Play

PAGE : 1

Tip Off at 7:30 PM on 02/25/92 at GIRLS STATE TOURNAMENT - a Product of LEXIC
Produced by the RNSAA Sweet Sixteen State Open Tournament

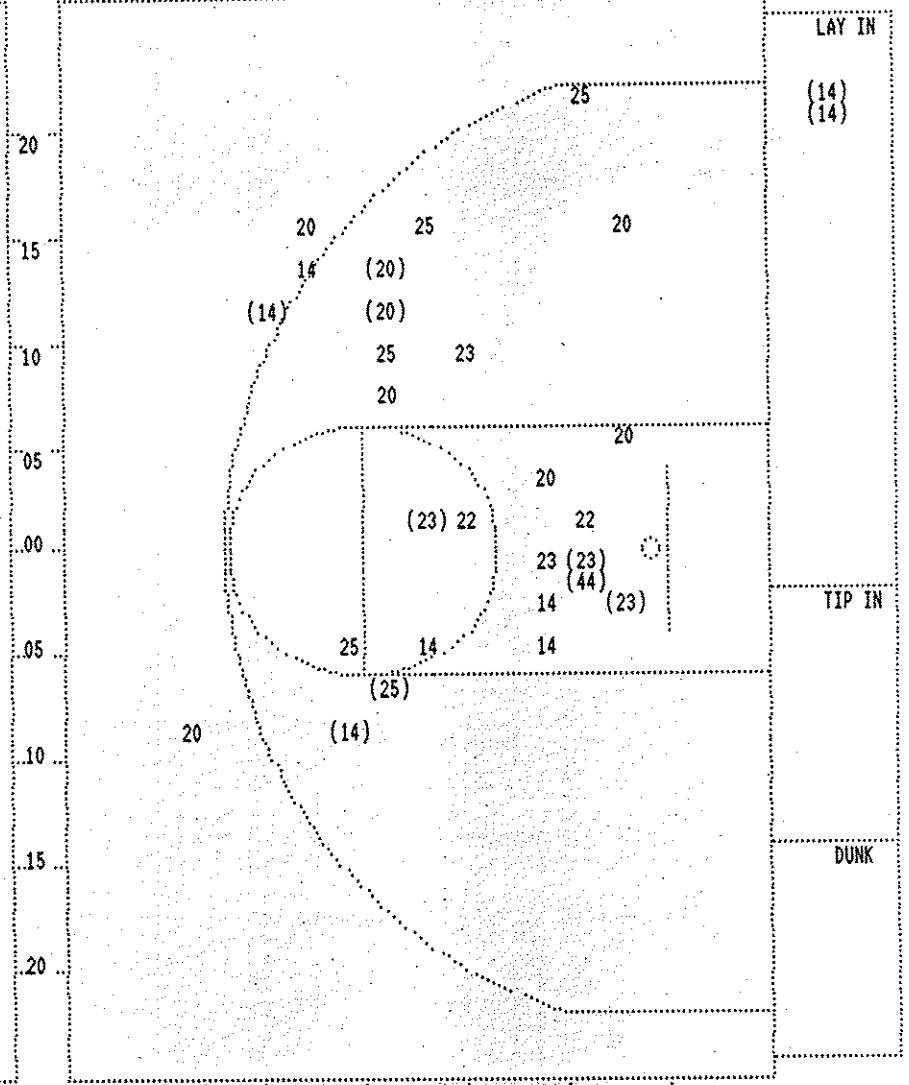
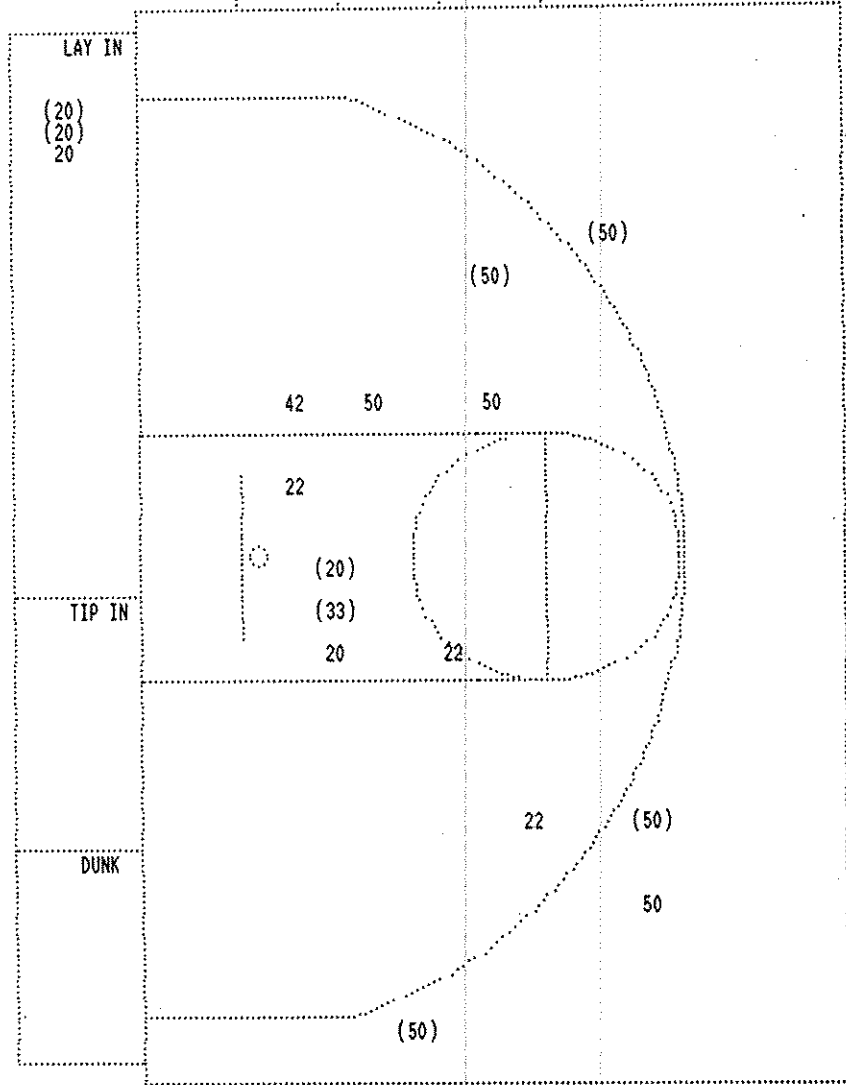
Player	Team	RUSSELL COUNTY	
LOY, DEBBIE	HIGGINBOTHAM, S.	REXROAT, KELLY	BECK, DUCHIE, McFARLAND, K.
1	1	Ball to LAKERS Foul on McFARLAND, K.	
1-2	50.0%	1-2	50.0%
1	1	3 pt	23 ft Right Angle Jump shot by HIGGINBOTHAM, S. Assist by McFARLAND, K.
2-3	66.6%	2-4	50.0%
2	2	3 pt	22 ft Left Angle Jump shot by HIGGINBOTHAM, S. Assist by McFARLAND, K.
1	2	Foul on HIGGINBOTHAM, S.	
1-1	100%	3-5	60.0%
1	3	Bank Layup by LOY, DEBBIE Assist by HIGGINBOTHAM, S.	
2-2	100%	4-7	57.1%
Bank Layup by LOY, DEBBIE Sub In: MORRIS, COURTNEY Out: REXROAT, KELLY			
REB: 3 A: 3 BLK: 2 TO: 2 PF: 2 S: 0 FT: 0-0 00.0% FG: 4-7 57.1%			
3-5	60.0%	5-9	55.5%
1	4	17 ft Right Side Jump shot by HIGGINBOTHAM, S. Assist by BECK, DUCHIE	

Time	Score	APOLLO	Player	Team
		TRUITT, CARRIE, MORRISON, ABBY, ALLISON, SARAH, TOWNSEND, LAURIE, POWERS, AMY		
1 7:15				
1 7:15	0-1*	MORRISON, ABBY	, 2 Free Throws missed 1st made 2nd 1-2 50.0% 1-2 50.0%	
1 7:05	*3-1			
1 6:34	3-3*	18 ft Left Side Jump shot by TRUITT, CARRIE	1-1	100% 1-2 50.0%
		Assist by POWERS, AMY	1	1
1 5:58	*6-3			
1 5:36	6-5*	2 ft Lane Bank by ALLISON, SARAH	1-1	100% 2-3 66.6%
		Assist by TOWNSEND, LAURIE	1	2
1 5:27				
1 5:19		Foul on ALLISON, SARAH	1	1
1 5:19	*8-5			
1 4:05	*10-5			
1 4:01				
1 4:01		REB: 3 A: 2 BLK: 0 TO: 2 PF: 1 S: 2 FT: 1-2 50.0% FG: 2-5 40.0%		
1 3:14		Sub In: WHITMER, CARRIE Out: POWERS, AMY		
1 2:49	10-7*	17 ft Left Angle Jump shot by TRUITT, CARRIE	2-4	50.0% 3-7 42.8%
		Assist by TOWNSEND, LAURIE	2	3
1 2:23		Foul on WHITMER, CARRIE	1	2
1 1:57	*12-7			
1 1:22	12-9*	2 ft Lane Follow by ALLISON, SARAH	2-2	100% 4-9 44.4%

T I M E - O U T

APOLLO No. 1

FIRST HALF SHOT CHART Produced by the KHSAA Sweet Sixteen Stat Crew with FINAL III - a Product of LEXICON SPORTS™



RUSSELL COUNTY					
Player			Player		Player
20 - LOY, DEBBI	3 / 5	60.0%			
50 - HIGGINBOTH	4 / 7	57.1%			
33 - REXROAT, K	1 / 1	100.0%			
22 - BECK, DUCH	0 / 3	0.0%			
42 - POPPLEWELL	0 / 1	0.0%			
Layups	1-9 Ft	10-15 Ft	Over 15 Ft	3 Pointers	Total
2 / 3	2 / 7	0 / 1	1 / 2	3 / 4	8 / 17
66.7%	28.6%	0.0%	50.0%	75.0%	47.1%

APOLLO					
Player			Player		Player
20 - TRUITT, CA	2 / 8	25.0%	44 - JOINES, SHI	1 / 1	100.0%
22 - MORRISON,	0 / 2	0.0%			
23 - ALLISON, S	3 / 5	60.0%			
14 - TOWNSEND, L	4 / 8	50.0%			
25 - POWERS, AM	1 / 5	20.0%			
Layups	1-9 Ft	10-15 Ft	Over 15 Ft	3 Pointers	Total
2 / 2	3 / 10	2 / 6	3 / 6	1 / 5	11 / 29
100.0%	30.0%	33.3%	50.0%	20.0%	37.9%